

Gering, Scotts Bluff County, NE

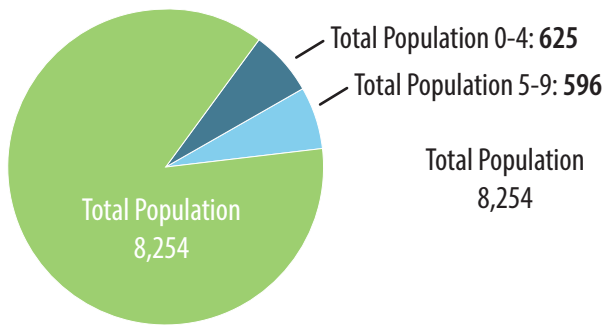
Community Conversation About Early Childhood Programs and Services



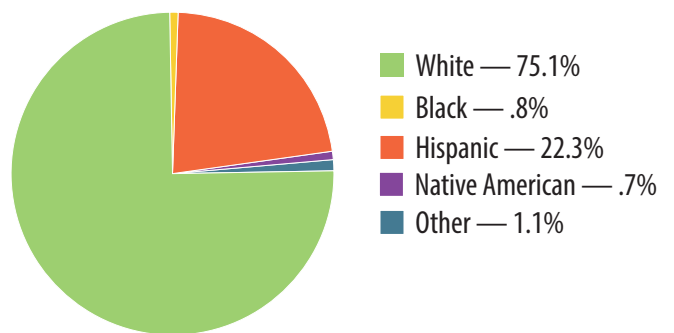
The Communities for Kids initiative was created in response to community requests for assistance with shortages of high-quality early care and education programs — shortages that both impact children’s optimal development and pose a challenge for communities hoping to attract and retain the viable workforces they need to thrive.

Communities for Kids partners with communities’ public and private entities to support and coordinate planning for access to high-quality early care and education for all children birth through age eight. These partnerships are customized to address each community’s unique assets and needs — so each community can grow and prosper well into the future.

Gering Demographics



Other Demographics

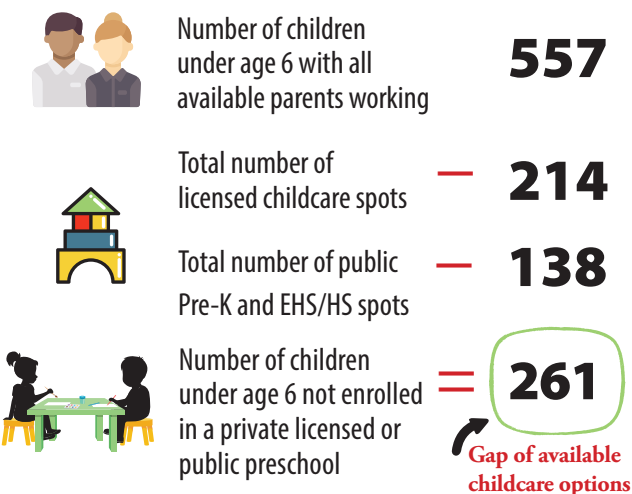


Median Household Income



Estimated per capita income	\$30,632
Gering population below poverty level	7%
Nebraska population below poverty level	12%

Quality Childcare Availability



Public Early Childhood Programs*

Public Pre-Kindergarten programs	90
Head Start	48
Total Public Early Childhood Spots	138

Private Early Childhood Programs

Licensed In-home Childcare Providers	8
Licensed Center-based Childcare Providers	3
Licensed Preschool Providers	1
Total Capacity	281

Comparison Rates and Outcomes

	GERING PUBLIC SCHOOLS	ALL NEBRASKA
Mobility	9.6%	8.3%
Free/Reduced Lunch	46%	46%
High School Graduation Rate	87%	88%

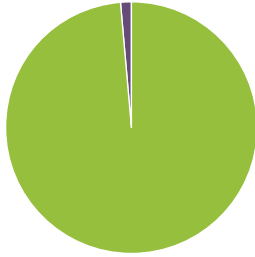
nep.education.ne.gov

*Locally provided data

Community Assessment Group information

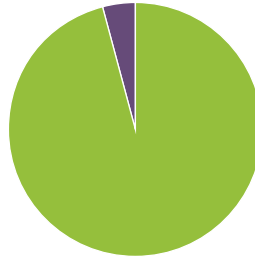
The Gering Communities for Kids team worked together to develop a survey to address the current and future needs of early childhood care and learning opportunities in the community. Surveys were provided online via Survey Monkey in Fall of 2020. A total of 184 surveys were collected.

How important is the availability of high-quality child care to the future growth and development of our community?



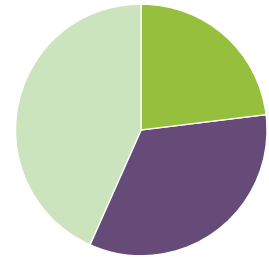
Answered: 177 Skipped: 7

How important is it to you that child care is affordable and accessible to all children?



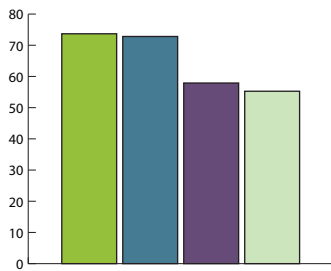
Answered: 177 Skipped: 7

How difficult was it to find the type of child care arrangements you wanted when you needed it?



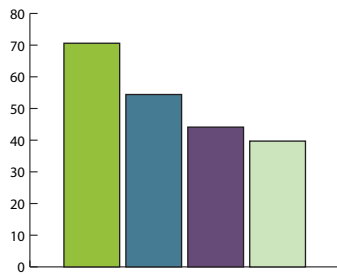
Answered: 104 Skipped: 80

What are the most important qualities you would look for to choose a child care provider if/when you needed one? Choose top 3 qualities you would look for.



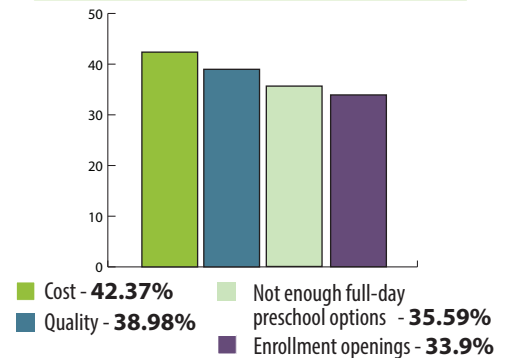
Answered: 114 Skipped: 70
 Note: Respondents were able to select more than one option

Choose the top three (3) priorities that are most important to you when choosing preschool in Gering.



Answered: 68 Skipped: 116
 Note: Respondents were able to select more than one option

Choose up to three (3) items that you feel are barriers when selecting a preschool in Gering.



Answered: 59 Skipped: 125
 Note: Respondents were able to select more than one option

"Being a parent can feel lonely and be hard at times. Also, it is very difficult to get my 3-year-old daughter the proper environment with her peers she needs for social development other than taking her to a daycare that, sadly, I cannot afford."

"As a law enforcement officer, community services are vital to ensuring the health and safety of children. Finding quality child care facilities can be difficult if you don't know others who can share their experiences."

"I really struggled when my children were of child care age, there was a big gap in providers for babies (under 18 months). The waiting list was huge, and I had to get on a provider list in my first trimester."